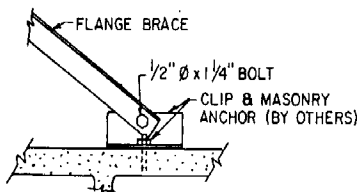
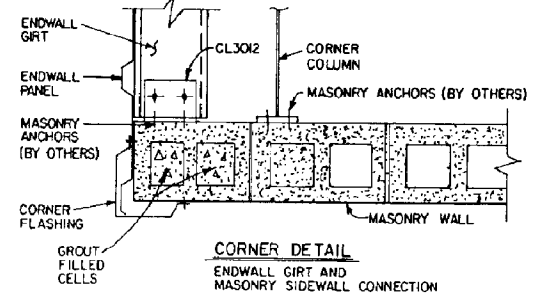
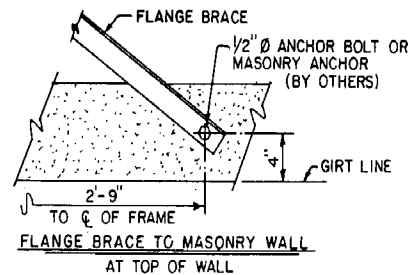
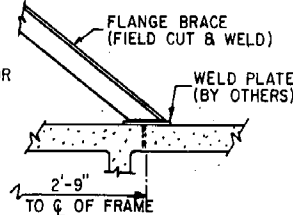
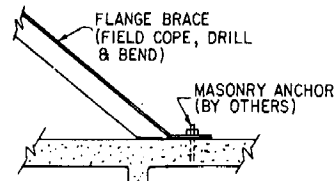


NOTE: FILL CELLS AT THE COLUMN AND FLANGE BRACE CONNECTIONS. COLUMN FLANGE BRACE MUST BE INSTALLED AS SHOWN FOR BLDG. TO HAVE ITS FULL DESIGN STRENGTH.



FLANGE BRACE TO MASONRY WALL DETAILS BELOW TOP OF WALL



Masonry Details