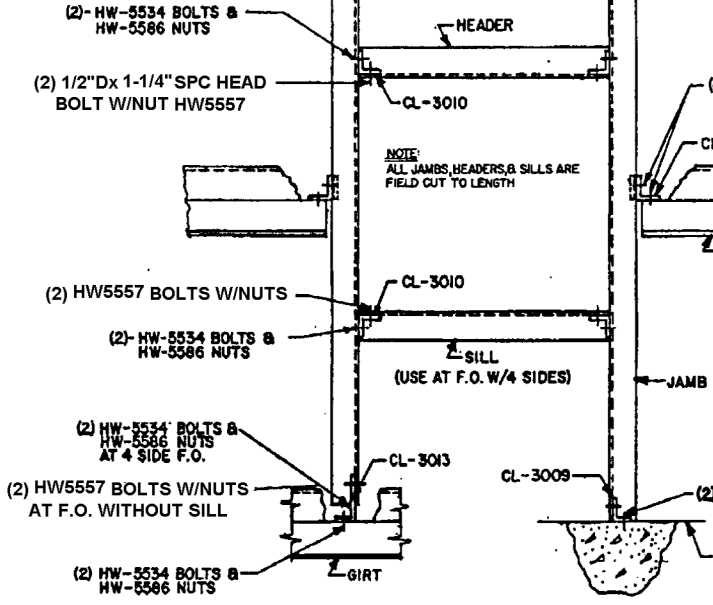
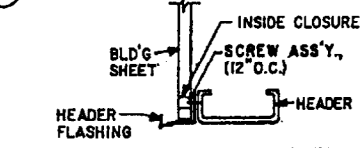


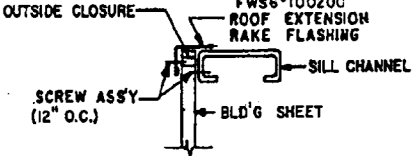
**ENDWALL - JAMB TO RAFTER CONDITION**



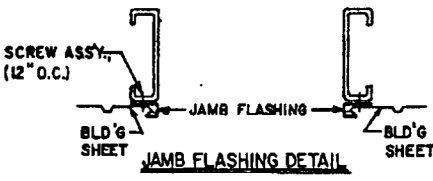
**FRAMED OPENING  
SIDEWALL & ENDWALL  
LOCATION DETAILS**



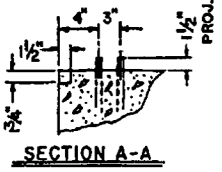
**HEADER FLASHING DETAIL**



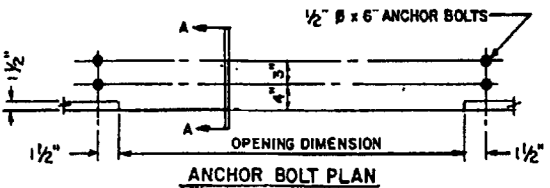
**PLATE GLASS WINDOW SILL FLASHING**



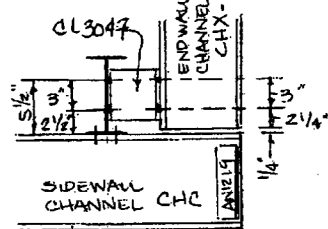
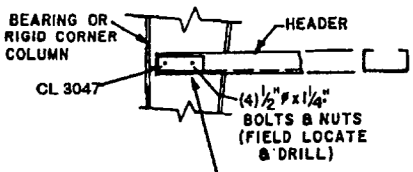
**JAMB FLASHING DETAIL**



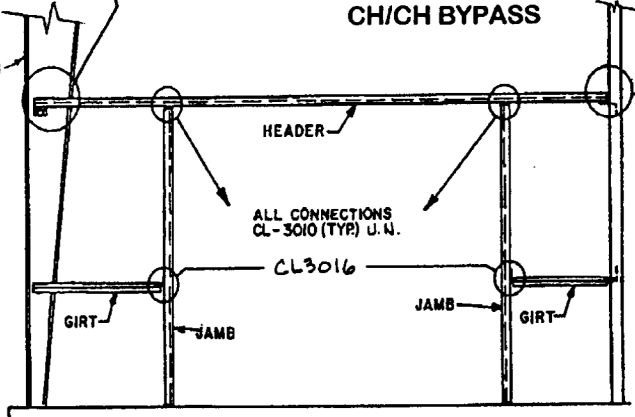
**SECTION A-A**



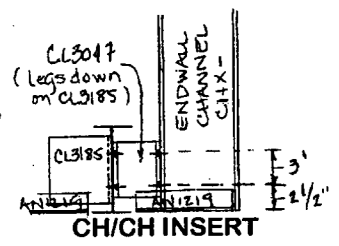
**ANCHOR BOLT PLAN**



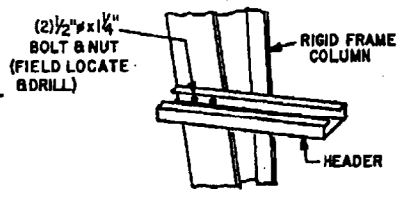
**CH/CH BYPASS**



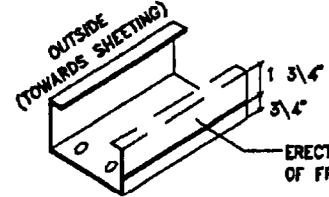
**OVERSIZED FRAMED OPENING  
SIDEWALL & ENDWALL LOCATION DETAILS**



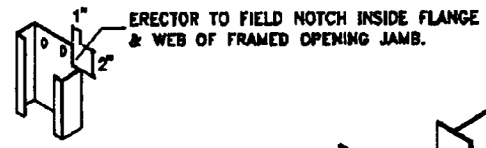
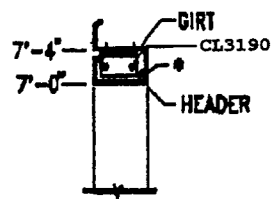
**CH/CH INSERT  
ENDWALL COLUMN OR SIDEWALL  
INSERT HEADER CONDITION**



**SIDEWALL BY-PASS HEADER  
CONDITION**

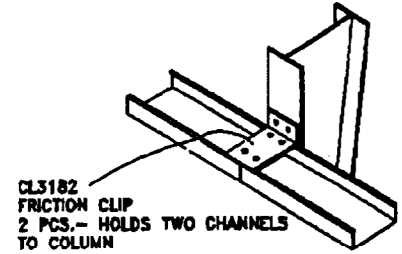


**\* NOTE 1**  
AT NO TIME SHOULD THE ERECTOR CUT OR MODIFY THE GIRT FLANGE, ALWAYS CUT HEADER CHANNEL.



**DETAIL FOR F.O. WITH 7'-0\"/>**

**NOTE: FOR HEADERS ABOVE 7'-0\"/>**



**Miscellaneous Framed  
Opening Details**

**NOTE:**  
JAMB TRIM PREFIX IS FJT6 - (RIB-12)  
FJS6 - (RIB-6)  
HEADER TRIM PREFIX IS FHT6 - (RIB-12)  
FHS6 - (RIB-6)