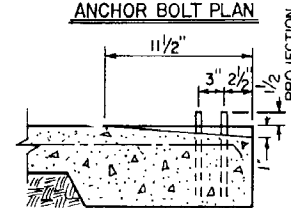
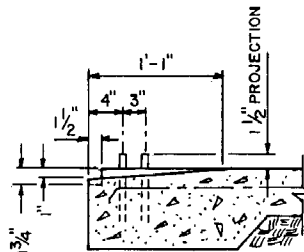
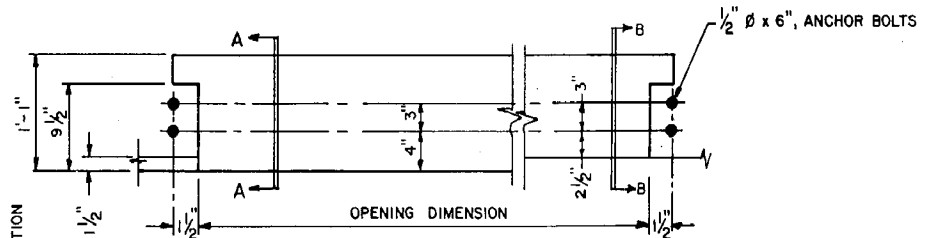
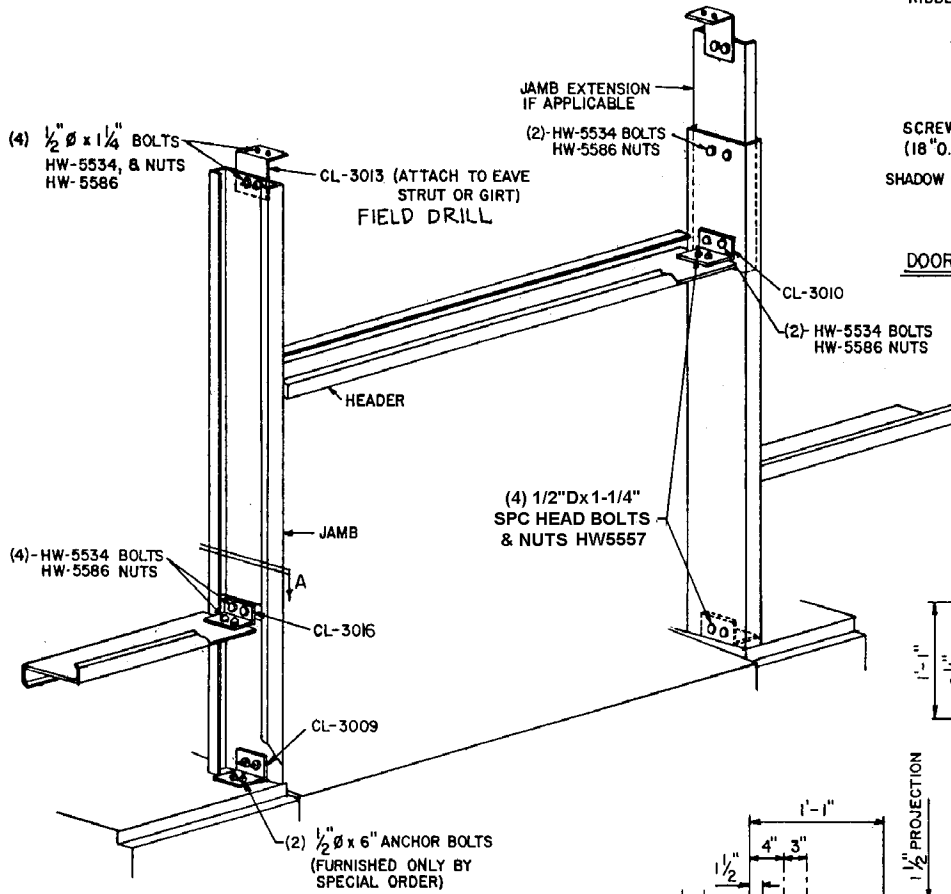
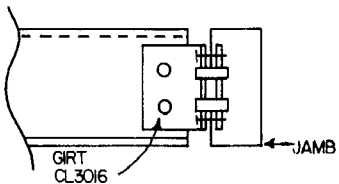


NOTE: HEADER FLASHING MUST PROJECT PAST JAMB FLASHING



**SECTION - A**

NOTE: USE TWO FRAMING SCREWS AT EACH CLIP CL3016 WHEN REQUIRED TO SUPPORT THE WEIGHT OF WORKMEN.



## Overhead Door Framed Opening Details