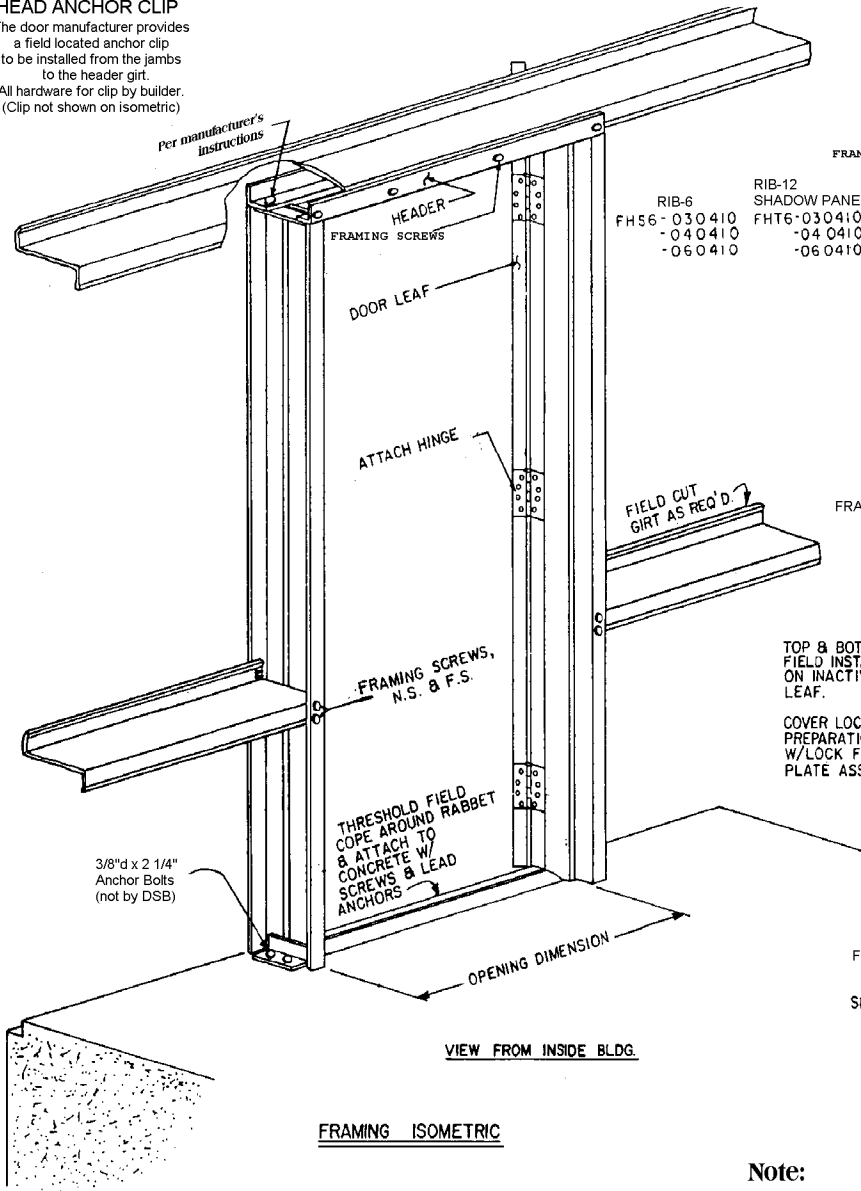
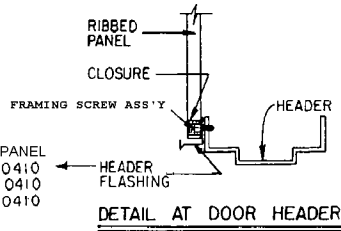


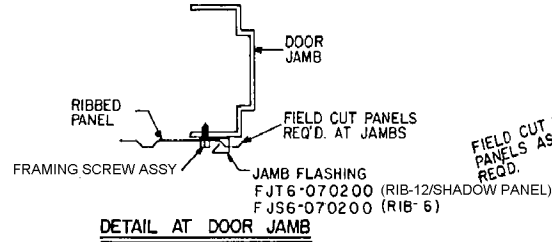
HEAD ANCHOR CLIP
 The door manufacturer provides a field located anchor clip to be installed from the jambs to the header girt.
 All hardware for clip by builder. (Clip not shown on isometric)



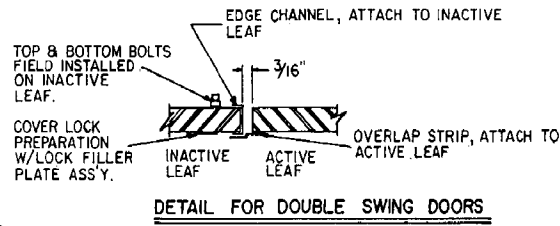
FRAMING ISOMETRIC



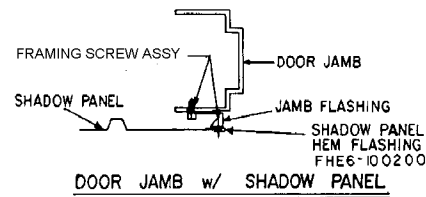
- | | |
|--|---|
| RIB-6
FH56-030410
-040410
-060410 | RIB-12
SHADOW PANEL
FHT6-030410
-040410
-060410 |
|--|---|



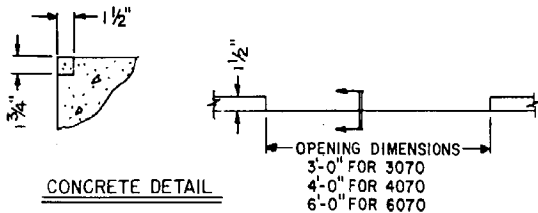
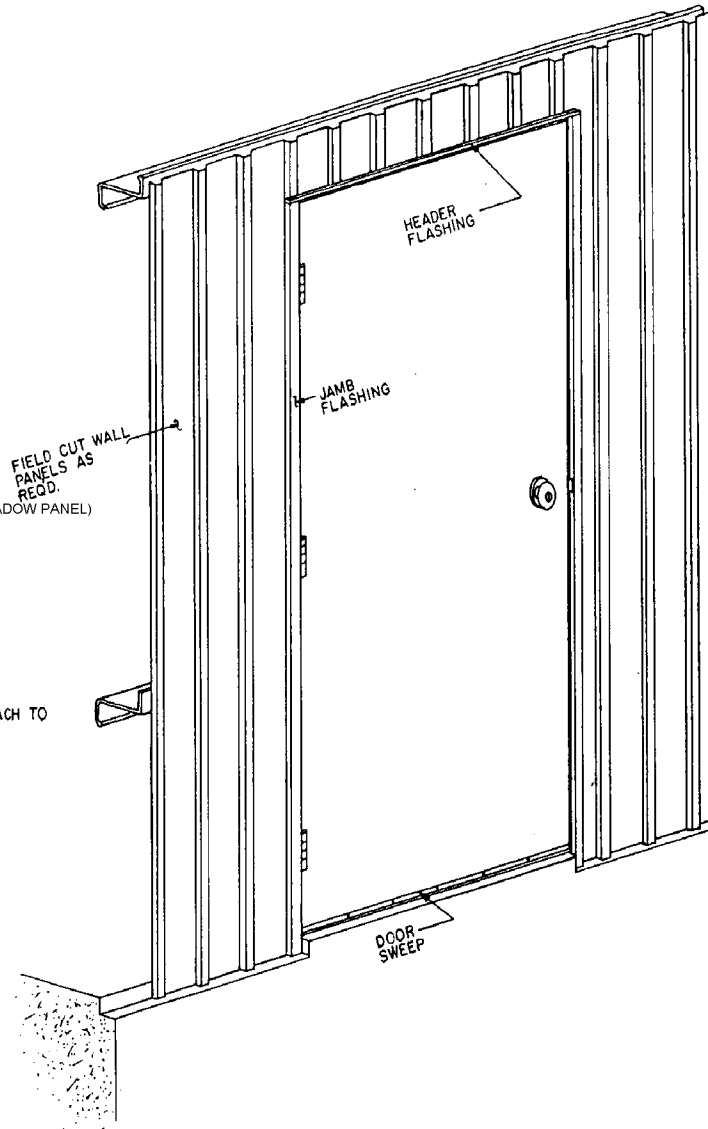
DETAIL AT DOOR JAMB



DETAIL FOR DOUBLE SWING DOORS



DOOR JAMB w/ SHADOW PANEL



CONCRETE DETAIL

Note:
 See manufacturer's installation instructions for size and location of all bolts and screws.

The purpose of this sheet is to show the interaction of the metal building and door and is not meant to replace the manufacturer's installation instructions.

Product Approval numbers are shown on cover sheet of drawing package.

Self Framing Walk Door Details