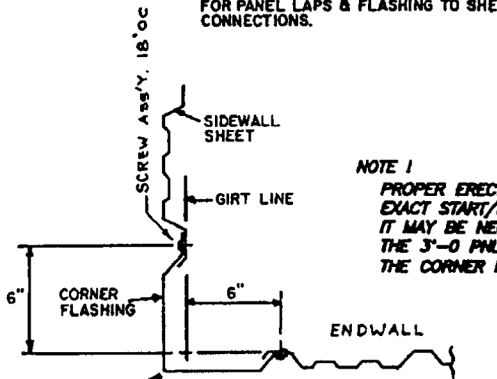
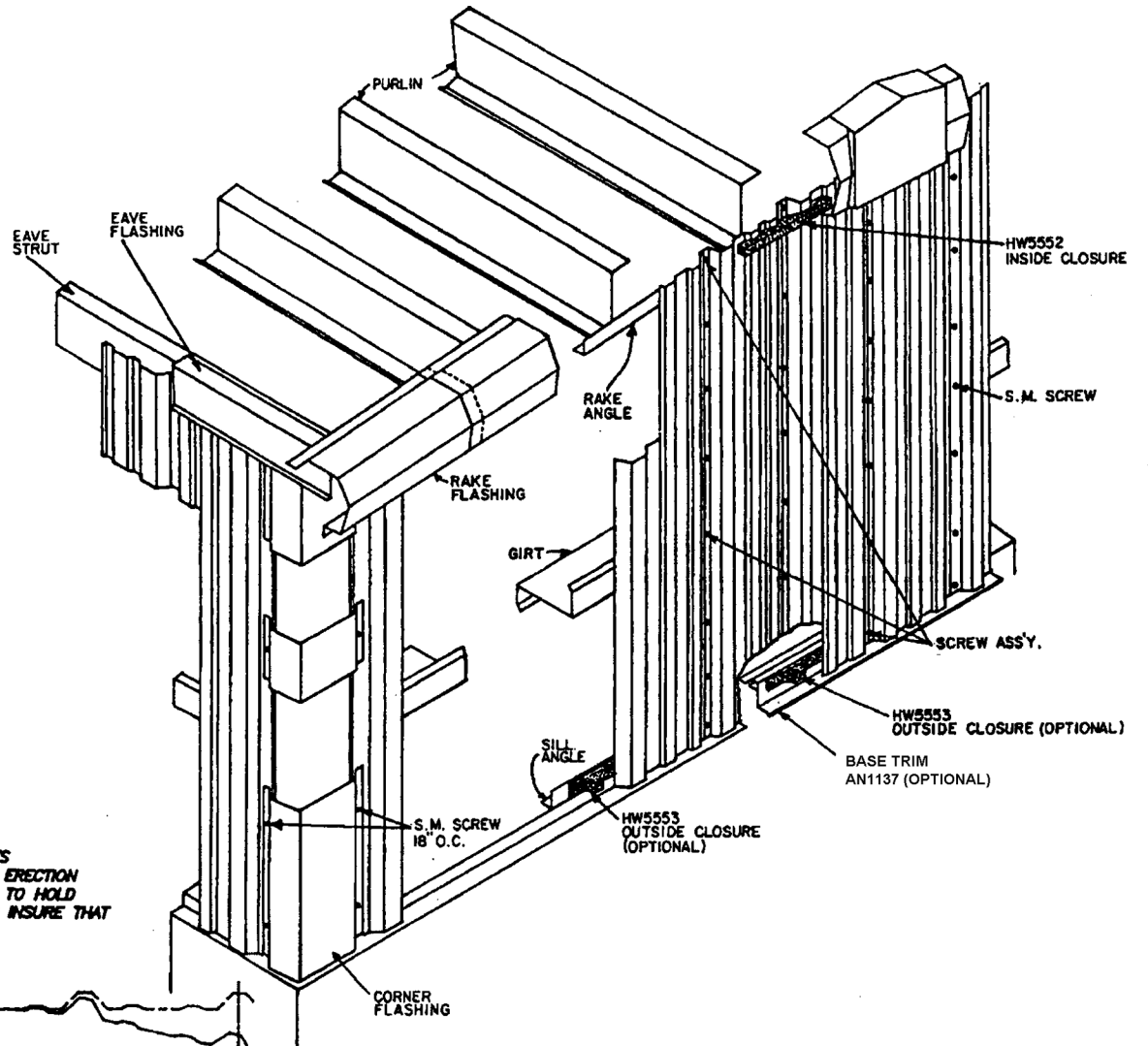


WALL FASTENER SPACING (INCLUDES DOUBLED GIRTS)

NOTE: SHADOW PANEL SHEETING IS THE RIB-12 PANEL REVERSED. THE ERECTOR MUST MAKE SURE THE FINISHED COLOR SIDE IS TO THE OUTSIDE.

NOTE: SWEEP ALL FILINGS FROM PANELS DURING & AFTER ERECTIONS.

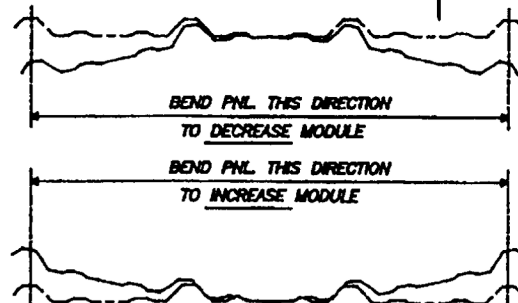
NOTE: (OPTIONAL) SELF-DRILLING SCREWS S.D. SCREWS ARE USED FOR ATTACHING FLASHING & SHEETING TO SECONDARY FRAMING ONLY. STD SCREWS ARE USED FOR PANEL LAPS & FLASHING TO SHEETING CONNECTIONS.



SECTION THRU CORNERS

OCT6-LENGTH (CONFIRM WITH CALL OUT ON CONSTRUCTION DRAWINGS)

NOTE 1
PROPER ERECTION OF SHADOW PANELS REQUIRES EXACT START/END DIMENSIONS. DURING PANEL ERECTION IT MAY BE NECESSARY TO FIELD MODIFY PANELS TO HOLD THE 3'-0" PANEL MODULE THAT IS REQUIRED TO INSURE THAT THE CORNER FLASHING FITS CORRECTLY.



Shadow Panel Wall Sheeting Details