

TYPICAL GIRT CONNECTION AT RIGID FRAME WIND COLUMN

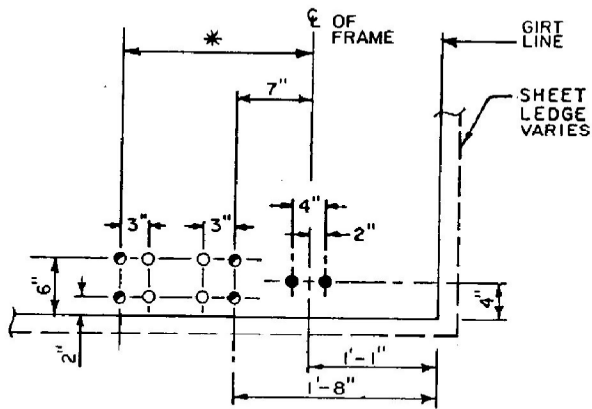
NOTE: WIND COLUMN DOES NOT INTERFERE WITH FRAMING AT BEARING FRAME

ALL BOLTS ARE 1/2" Ø x 1 1/4" HW5534 W/NUTS, HW5586

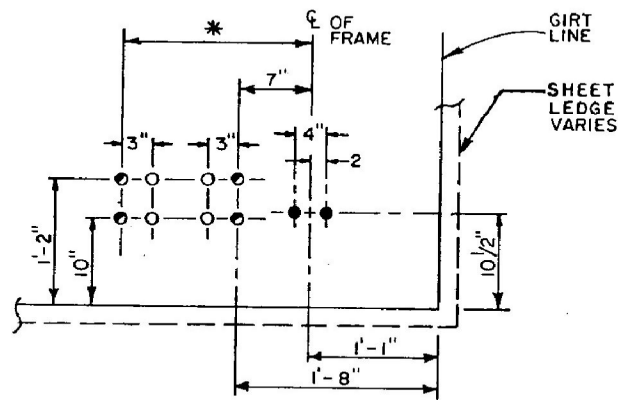
NOTE: BOLT LENGTH VARIES WITH FLANGE THICKNESS (CODE). CHECK JOB DRAWINGS FOR CORRECT PART NUMBERS AND LENGTHS.

(4) - 1/2" X 1 1/4" H.S. BOLTS HW5532, & NUTS HW5595, & H.S. WASHERS HW5610 (AT TOP ONLY)

1/2" Ø x 1 1/4" BOLTS, HW5534 NUTS, HW5586

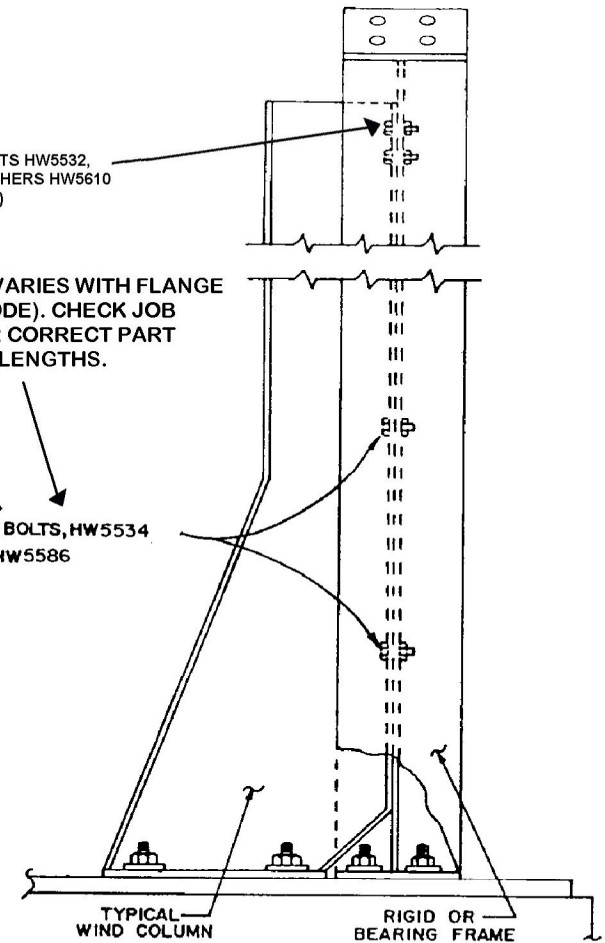


AT INSERT GIRT FRAME



AT BYPASS GIRT FRAME

WIND COLUMN ANCHOR BOLT PLANS



STANDARD WIND COL. FIELD ASSEMBLY TO RIGID FRAME OR BEARING FRAME

NOTE: ALL WIND COLUMN ANCHOR BOLTS HAVE A 3" PROJECTION.

AT SIDEWALLS THAT ARE OPEN TO REMAIN OPEN IT IS RECOMMENDED FULL SLAB WIDTH BE MAINTAINED FOR RIGID FRAME WIND COLUMN LOCATIONS

- - BASIC BLD'G. ANCHOR BOLTS
- - WIND COLUMN ANCHOR BOLTS
- - ADDITIONAL ANCHOR BOLTS USED ONLY WITH TYPE "E" WIND COLUMN

WIND COLUMN ANCHOR BOLT SCHEDULE			
COLUMN TYPE	* DIMENSION	QTY.	BOLT SIZE
A	1'-2 1/2"	4	7/8" Ø x 1'-3"
B	1'-2 1/2"	4	1" Ø x 1'-6"
C	1'-2 1/2"	4	1 1/4" Ø x 2'-0"
D	2'-1"	4	1 1/4" Ø x 2'-0"
E	2'-6"	8	1 1/4" Ø x 2'-0"

Insert Girt Wind Column Details